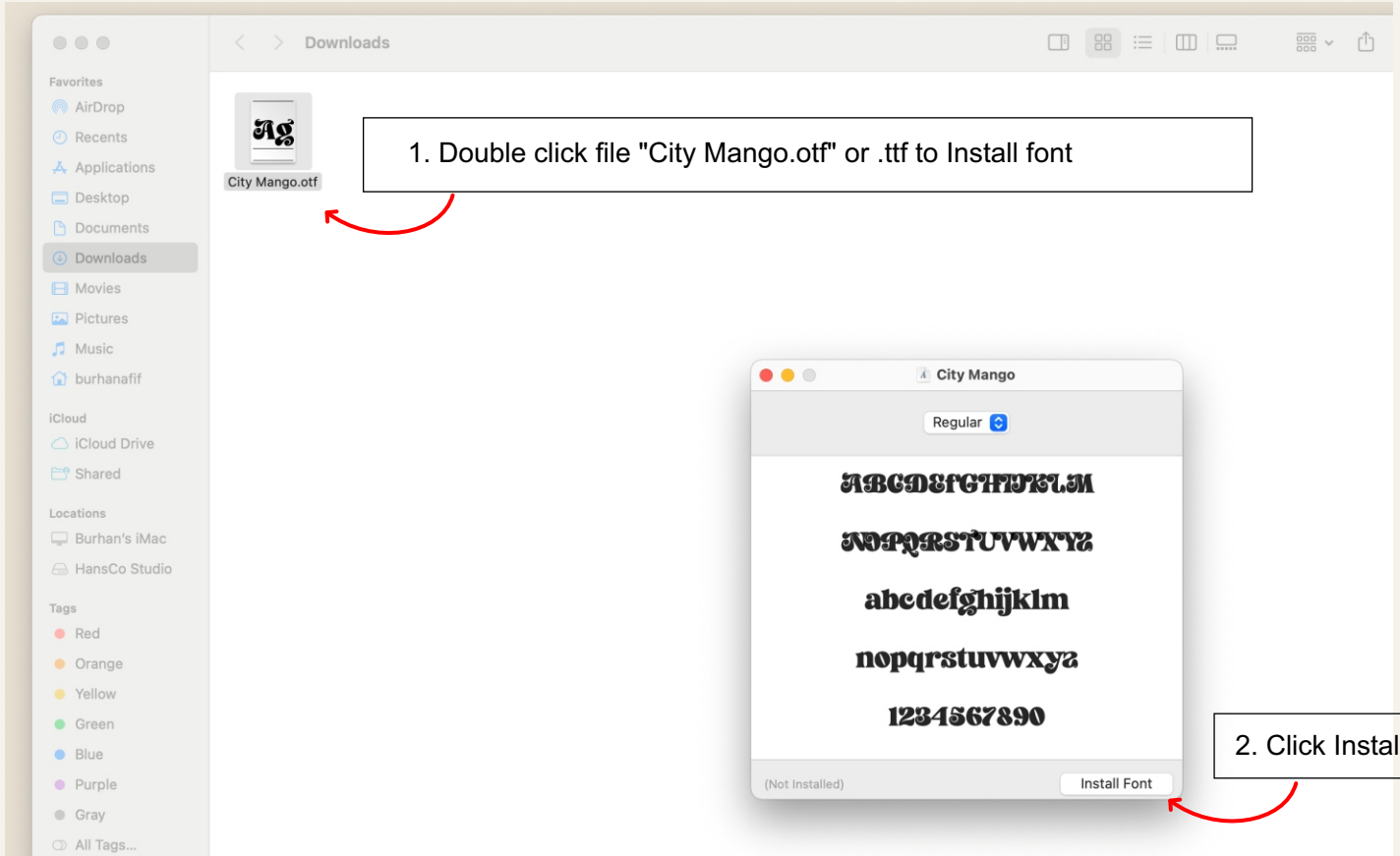
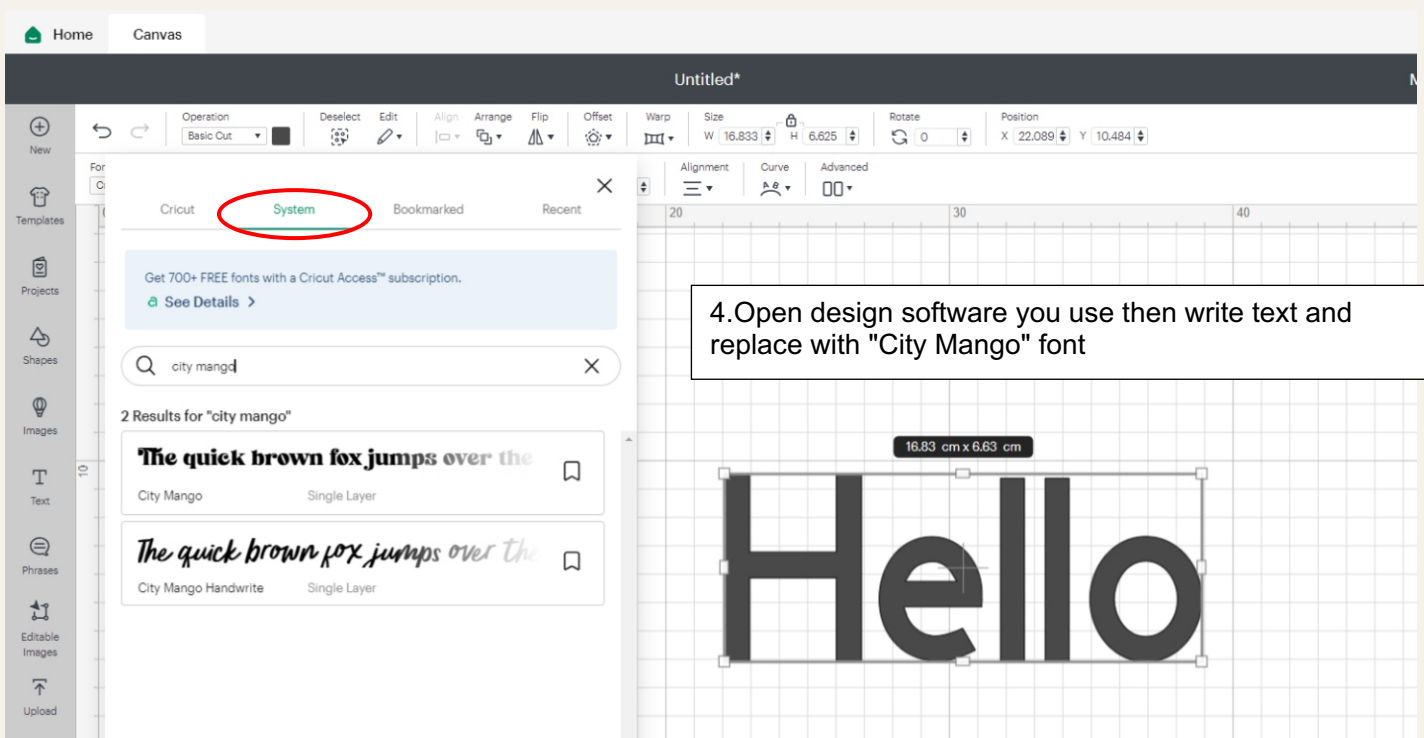


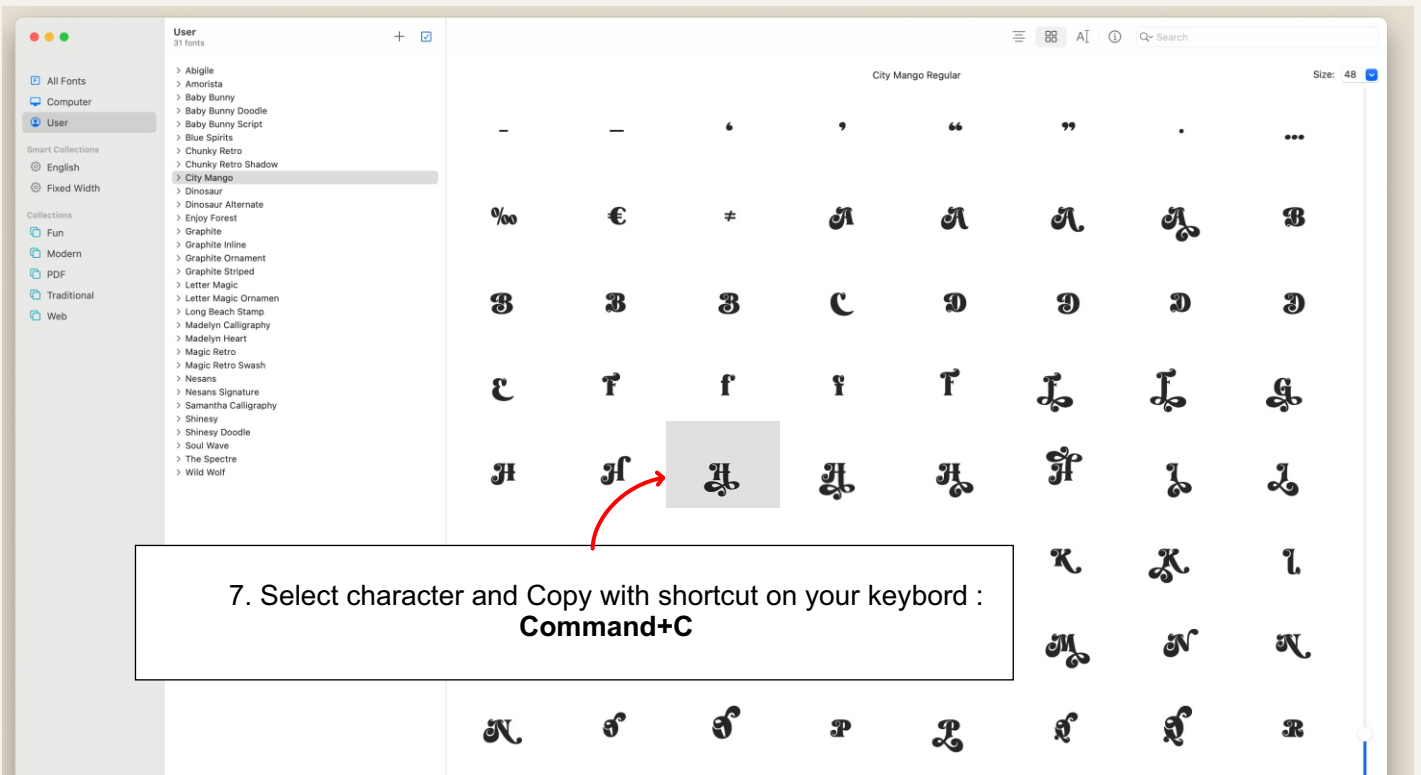
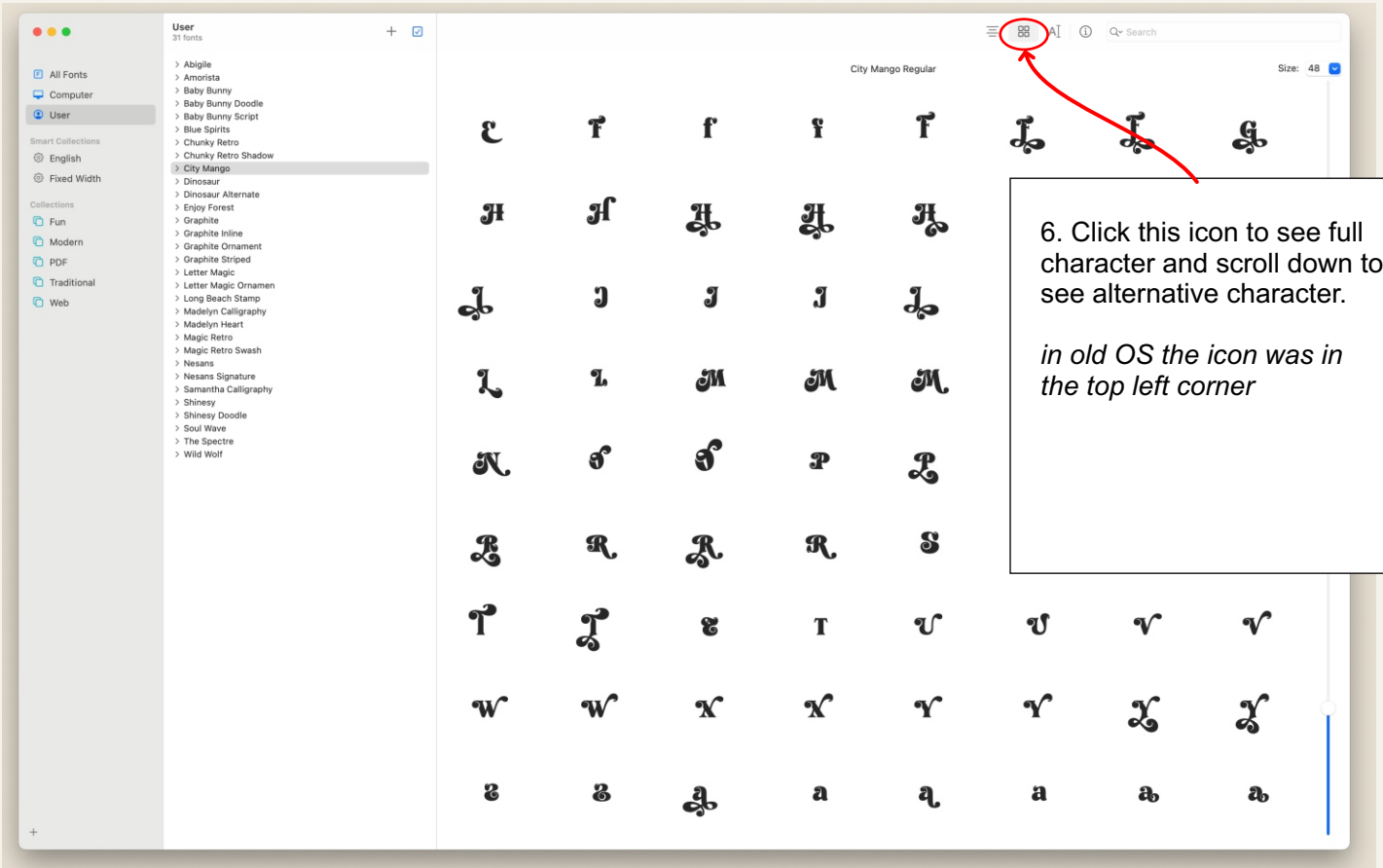
# For Mac :

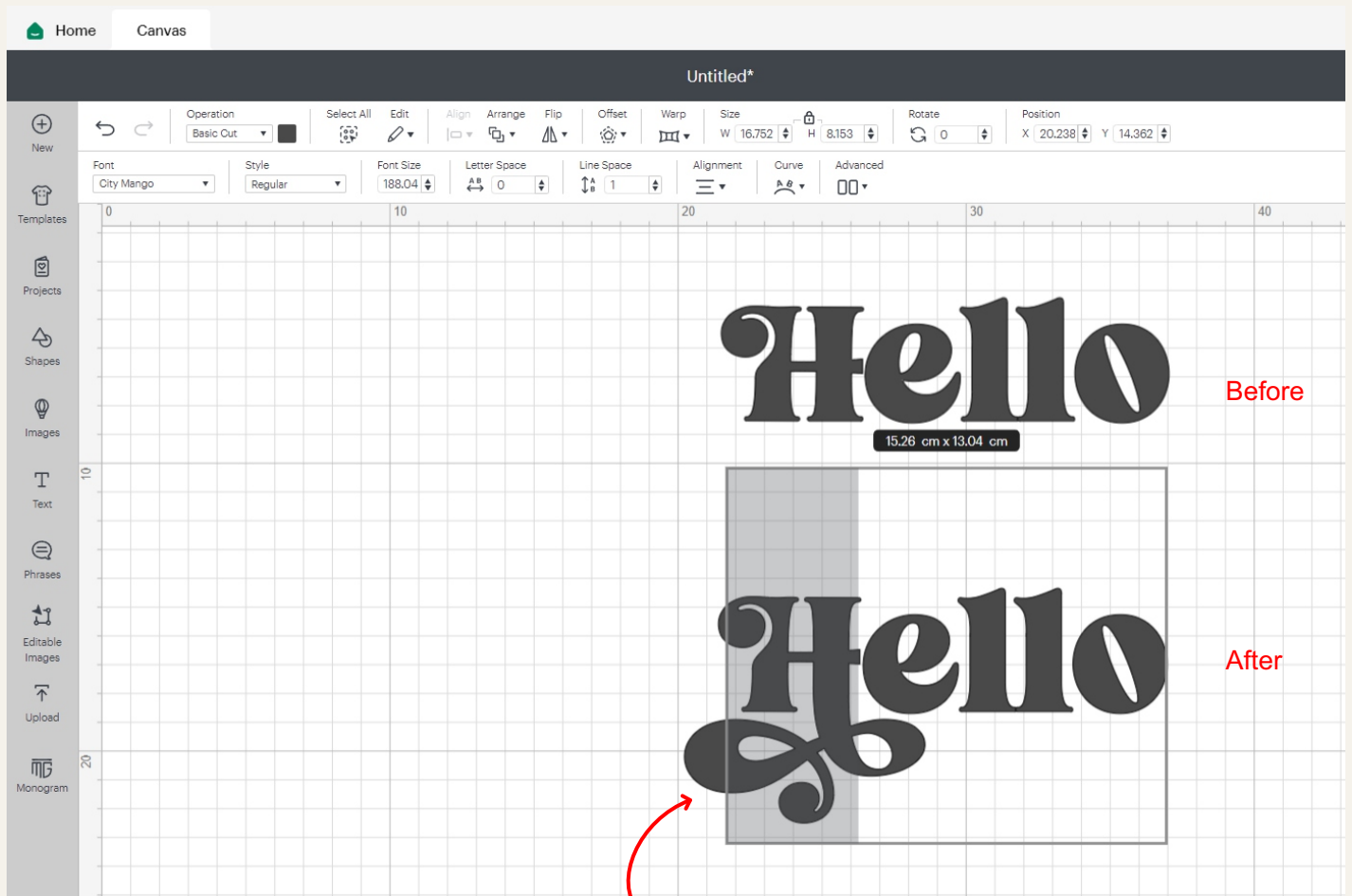


3. after the font is installed, close the Font Book and open your design software. example: Cricut Design



5. Open Font Book via Launchpad or Finder -> Applications -> Font Book.  
Then select "City Mango" font





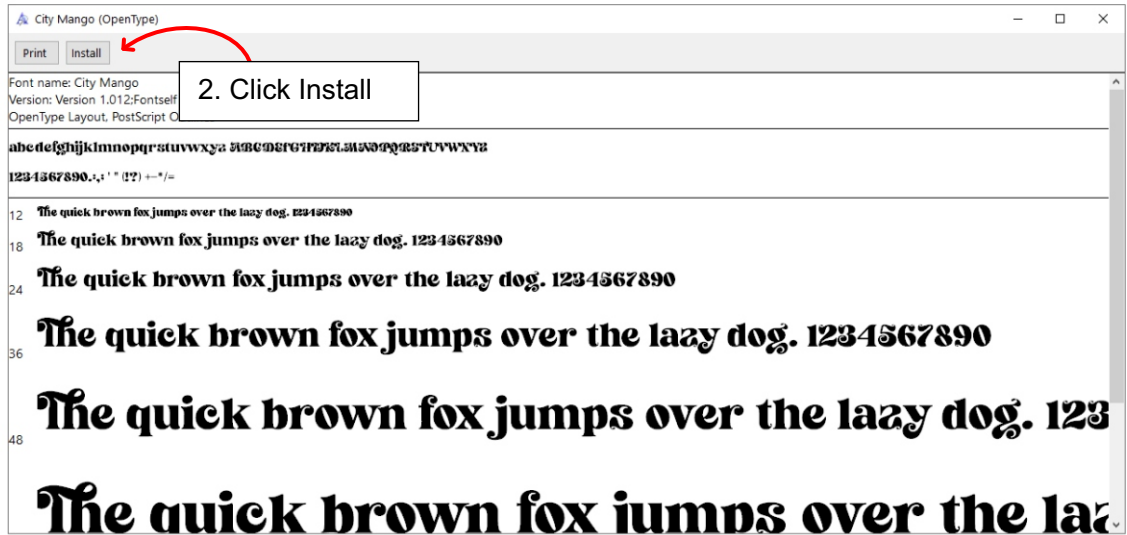
8. Block character and paste with shortcut on your keyboard :  
**Command+V**

**NOTE :**

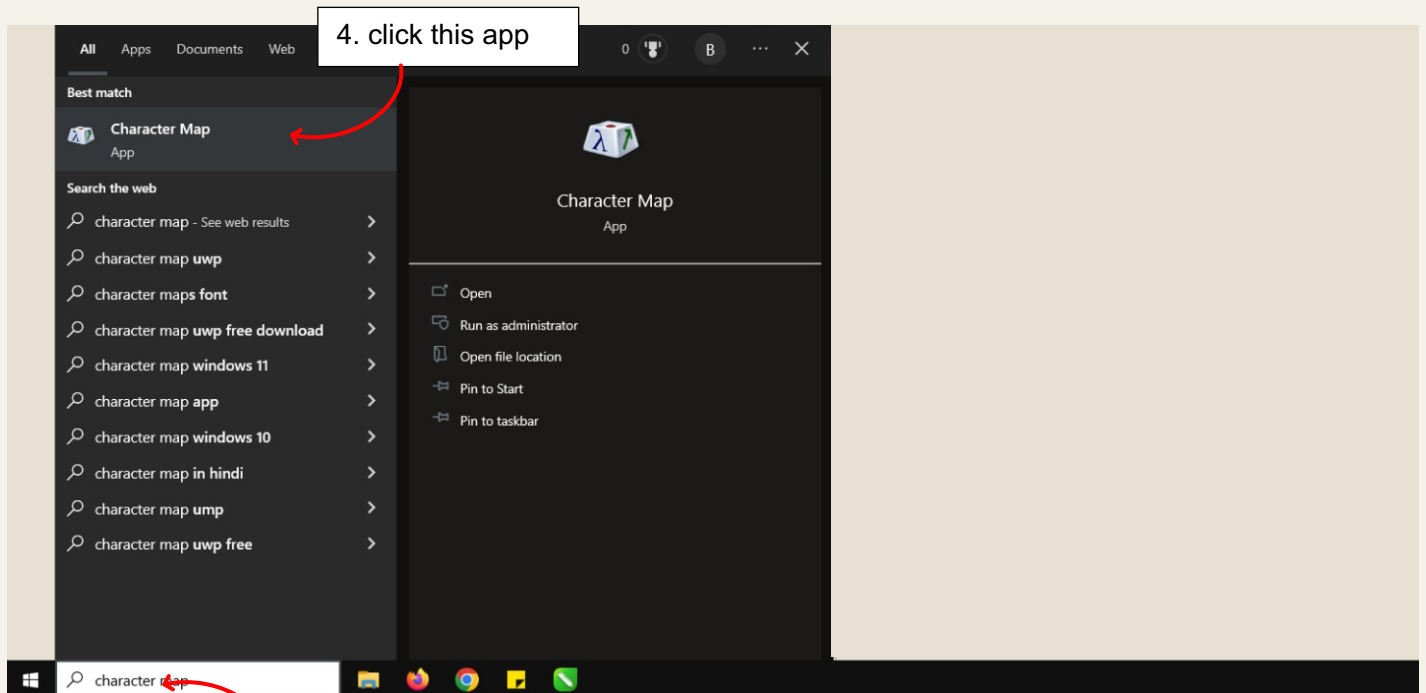
For Adobe and CorelDraw, you can access character alternative by block and highlight/click the small arrow under it and you will find alternative characters. Or you can open Glyph panel.  
Adobe family : Type -> Glyph or Window -> Glyphs

# For Windows :

1. Double click file .TTF to Install font  
( If you have installed the OTF version, that's no problem )

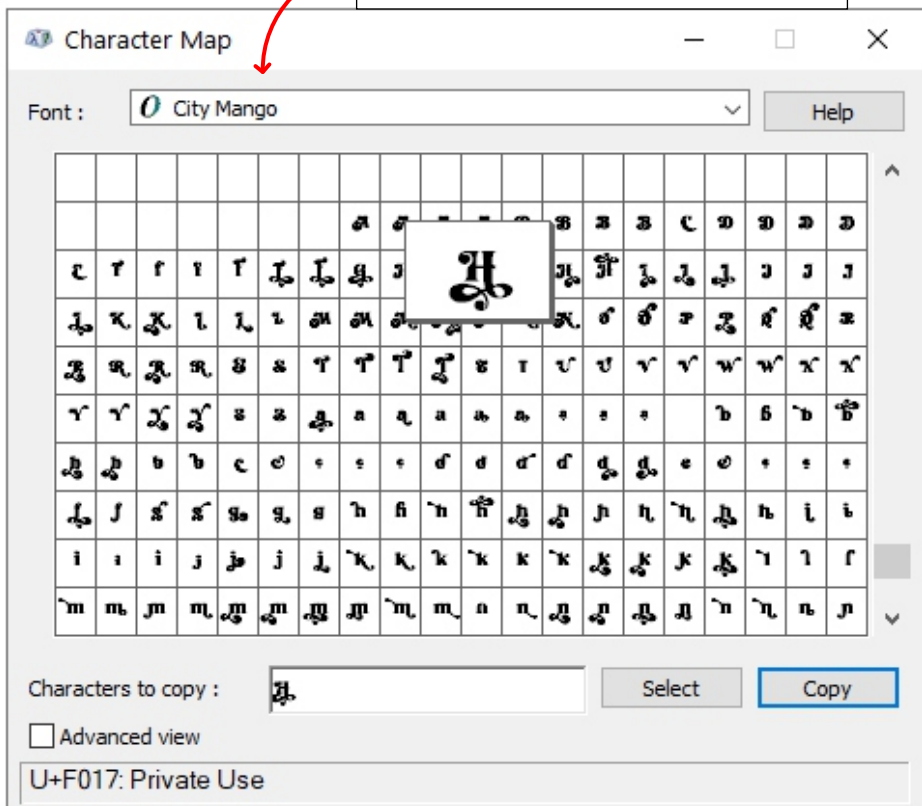


NOTE :  
otf = OpenType font  
tff = TrueType font



3. Search Character Map

5. Select "City Mango" font

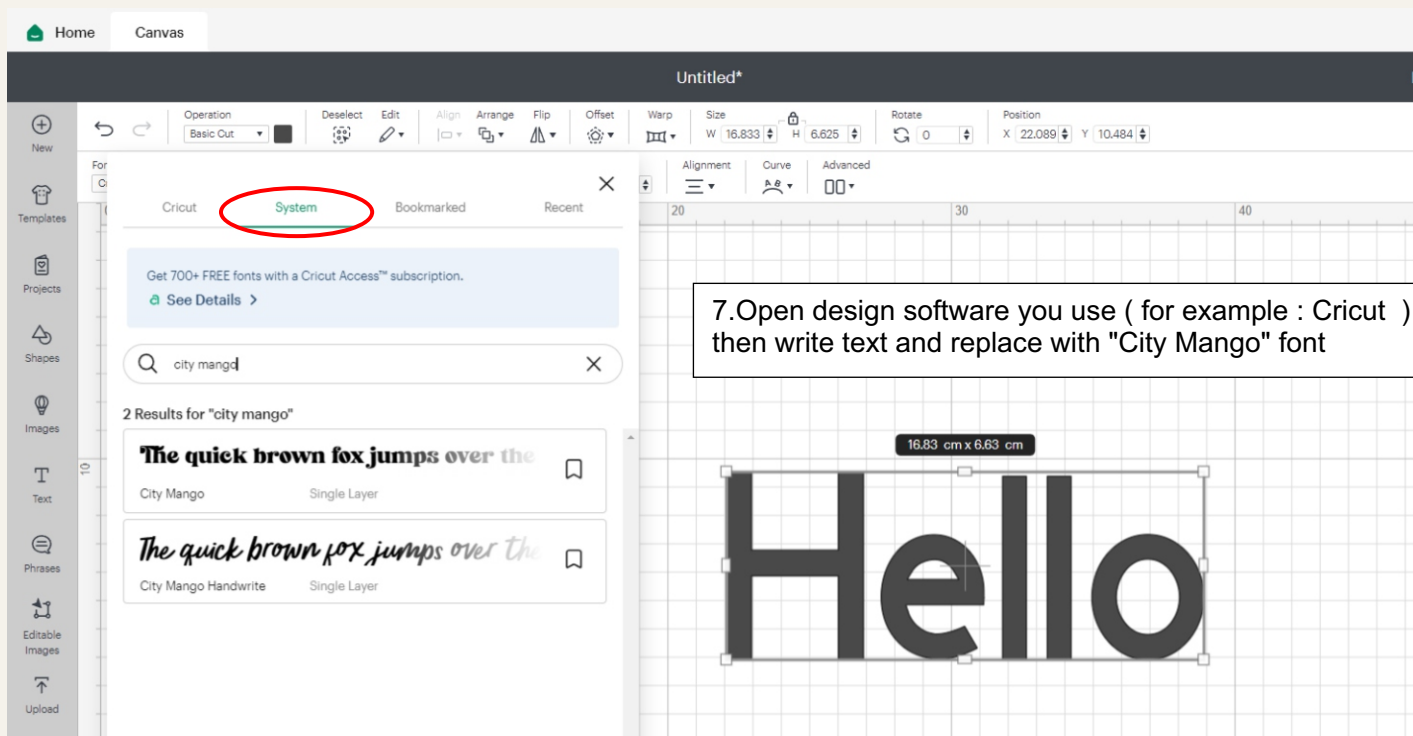


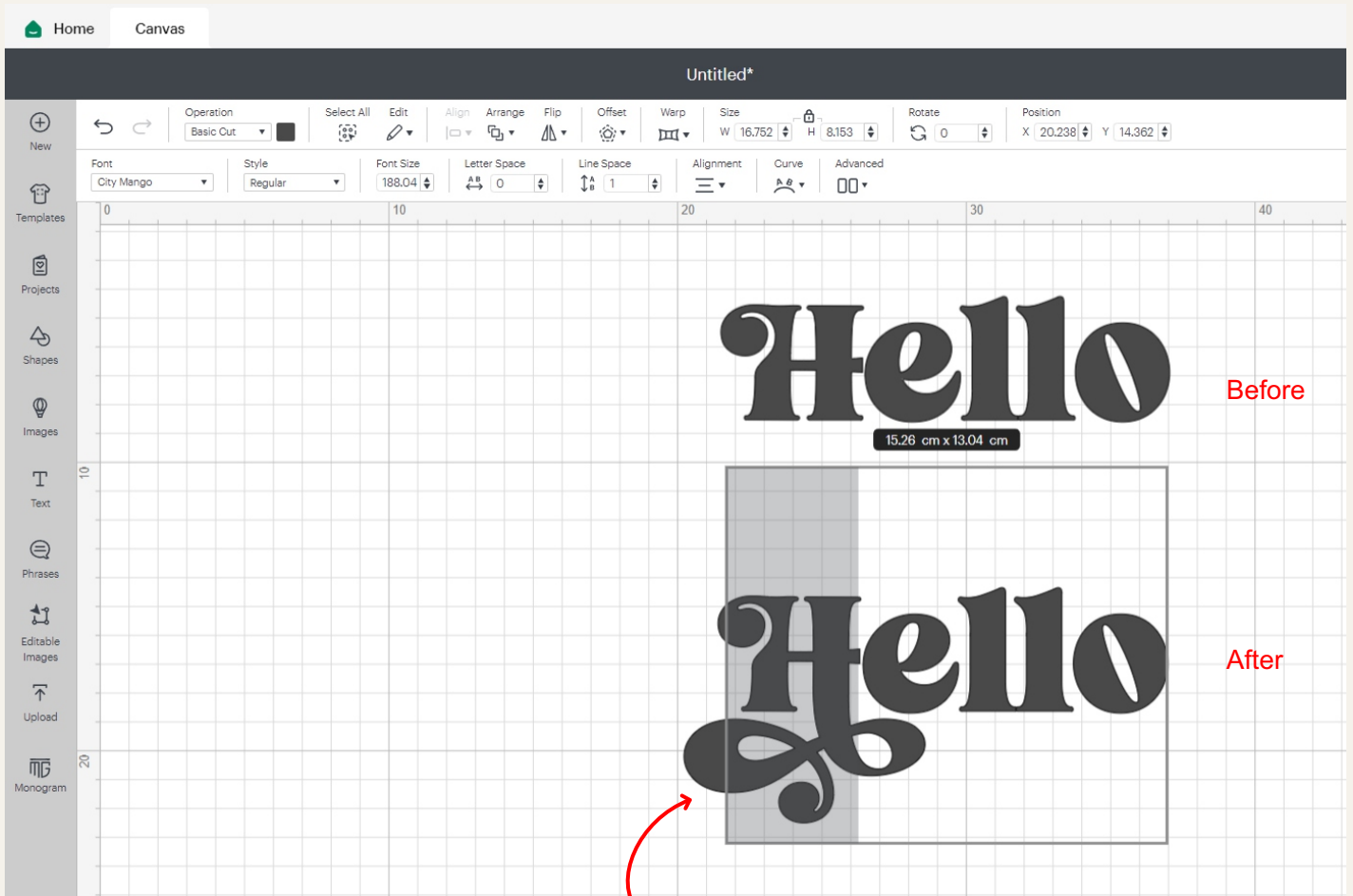
← Scroll at here

for the .ttf version you will find alternative characters at the top of the Character Map.

6. to use these alternative characters, all you have to do is click on the character you want then click "Select" and click "Copy" .

After that, Paste ( ctrl+V ) or right click and Paste on the character in your text canvas design





8. Block character and Paste with shortcut on your keyboard : **Ctrl+V** or right click and select "Paste"

**NOTE :**  
 For Adobe and CorelDraw, you can access character alternative by block and highlight/click the small arrow under it and you will find alternative characters. Or you can open Glyph panel.  
 Adobe family : Type -> Glyph or Window -> Glyphs

